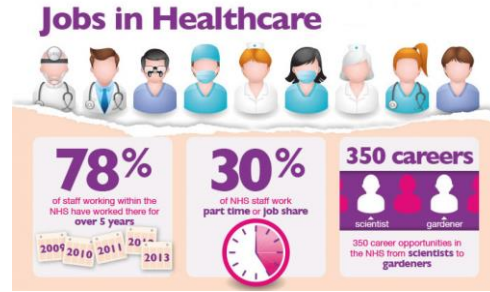


Careers – nursing, NHS, carer, paramedic, midwife, doctor, social worker, childcare



Well Being, feeling good, healthy body, mental health, diet, exercise, lifestyle choices



Health and wellbeing  
Human lifespan development  
Health and Social Care services and Values

Children, adults, elderly.  
Life circumstances and events



# What do we study and how?

- Health and wellbeing (exam)
- Human lifespan development (coursework)
- Health and Social Care services and Values (coursework)
  
- Coursework is portfolio based and will be produced at a computer – assignments, reports and practical evidence
- Case study exam in which you will be asked to create a health plan for an individual

# Our visit to Southampton Hospital...



Examining our DNA...



Putting our learning into context...

Blood pressure testing  
Ultrasound scanning  
CPR training



# Btec Tech Award

- Equivalent to GCSE
- Marked on a different scale – Pass, Merit, Distinction
- Recognised by FE and Sixth Form colleges as equivalent
- Vocational qualification